



Top View Series 0612 10W 24V

Product No. : FEN10WS-P7-G1 28HZ9x 24V140S7 0612L05

Technical Details

Product No. FEN10WS-P7-G1 28HZ9x 24V140S7 0612L05

Power	10W/M 3.04W/ft
Voltage	DC24V
CRI	90
Led Qty	140LEDs/M
Length/Reel	5M
Working Temperature	-25~60°C
Storage Temperature	-30~80°C
Voltage Range	23 ~25V dc
Reverse Voltage	25V dc

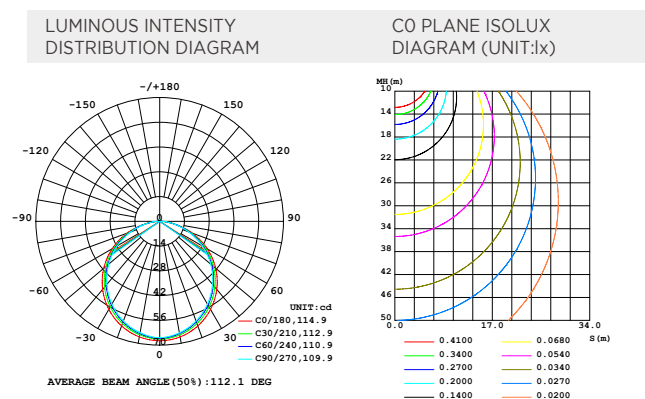
- Uniform light,dot free.
- Side emitting, meet a variety of side bending light shape.
- Robust housing with high quality silicon.
- UV proof for true outdoor application.
- Easy installation with clips and bendable track.
- Cut-able for flexible application.



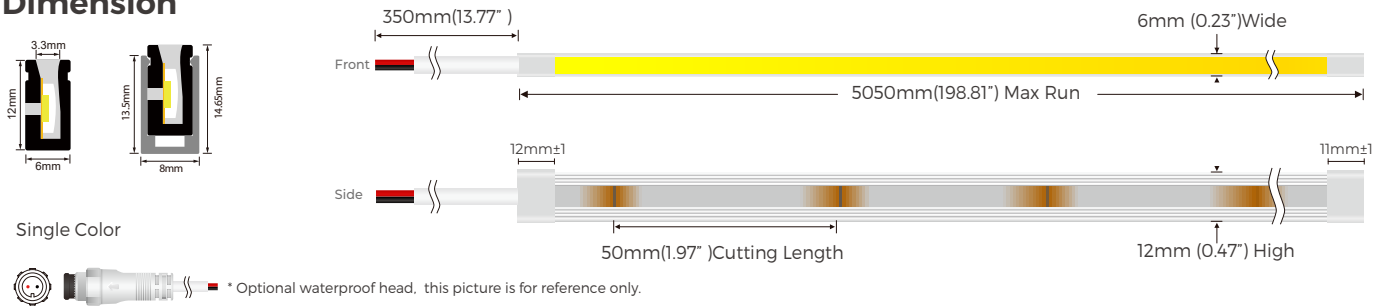
Lumens Per Meter

Color Temperature	
● 2700K	280lm
● 3000K	280lm
● 4000K	285lm
● 6000K	300lm

Light Distribution



Dimension

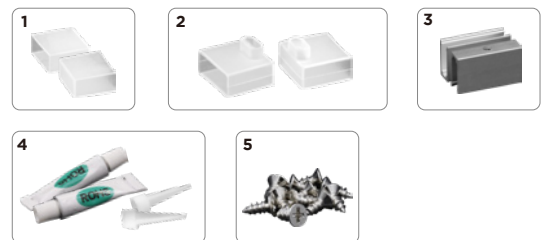


End cap

Products	Wire at end	Wire at side	Wire at bottom
Ordinary End Cap			

Accessories Specification

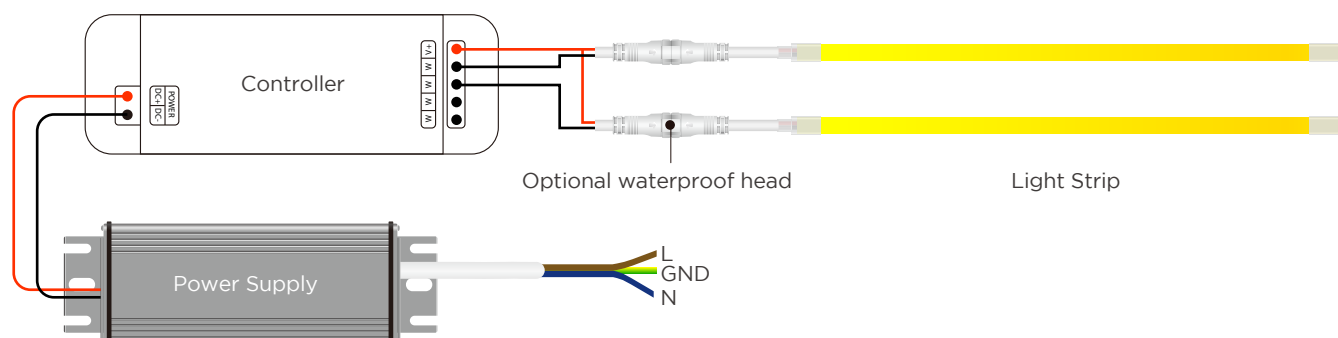
Name	Quantity	Note
1. End cap	4pc	
2. Front outlet end cap	2pc	*Optional
3. Clips	10pc	
4. Glue & Glue nozzle	2pc	
5. Screw	10pc	



Aluminum Profile List

Product NO.	Size	Section diagram	install
	5.6×11.5mm		

Power Connection Diagram



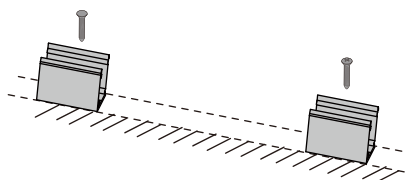
Recommended Power Supplies

Item Number	Description	Input Voltage	Output Voltage	Dimmable	Dimensions
DVH75-24-P7-G1LS AL	Waterproof Driver 75W	220-240	DC24V 3.12A	NO	165×60×36.5mm
DVH100-24-P7-G1 LS AL	Waterproof Driver 100W	220-240	DC24V 4.16A	NO	167×60×34.6mm
DVH150-24-P7-G1 LS AL	Waterproof Driver 150W	220-240	DC24V 6.25A	NO	167×60×34.6mm
DVH200-24-P7-G1LS AL	Waterproof Driver 200W	220-240	DC24V 8.33A	NO	216×65×39.5mm
DVH300-24-P7-G1 LS AL	Waterproof Driver 300W	220-240	DC24V 12.5A	NO	265×65×39.5mm

Installation

① Clip

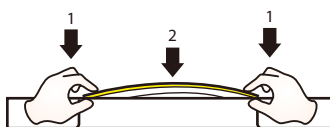
Fix the clips and aluminum profile via the screws.



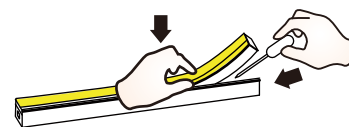
⚠ Suggestion: 2pcs clips per meter.

② Neon Series

Simultaneously install the neon from both ends.

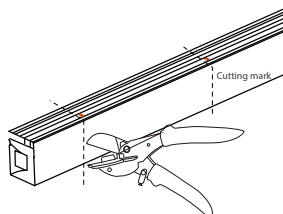


Should use tools to assist when remove the neon.



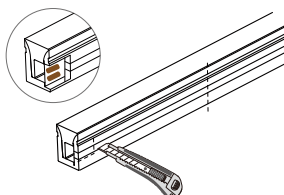
Cutting

① Cut the neon to be required length



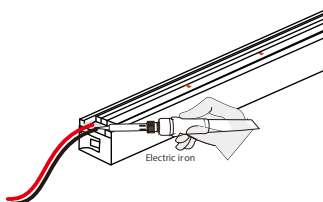
⚠ The minimum cutting unit is based on the cutting mark.

② Cut the side of neon, expose the soldering pad

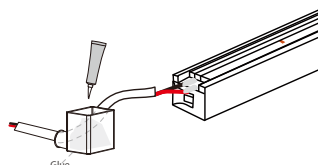


Soldering

① Solder the cable onto the PCB



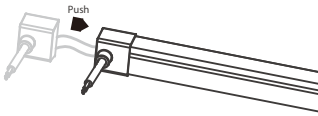
② Put the wire into and inject glue into the end cap



⚠ The amount of glue is about 1/3-1/2 of end cap.

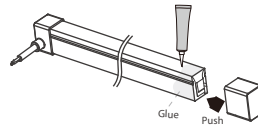
Intall end cap

① Push the end cap to wrapp end of neon

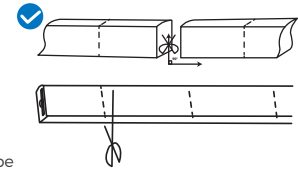


⚠ After the glue is injected, the neon needs to be laid flat for 2 hours to before other process.

② Apply gel around the tail of neon and install the end cap



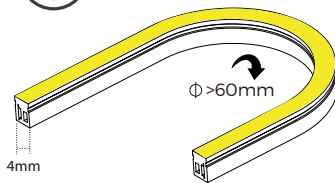
⚠ After the glue is injected, the neon needs to be laid flat for 2 hours to before project process. Glue will complete dry after 24hours.



Top bending series correct bending way.

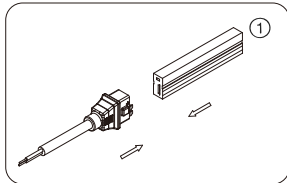


TIPS

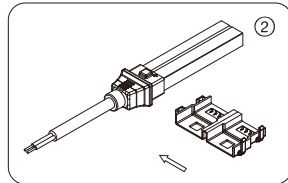


Installation of No-Soldering Connector

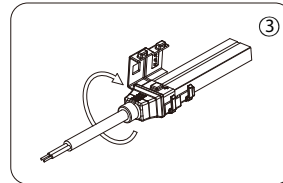
1. Installation of power cord connector



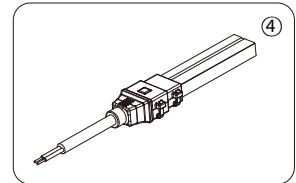
Push Neon into the connector.



Wrap the connector with the faster.

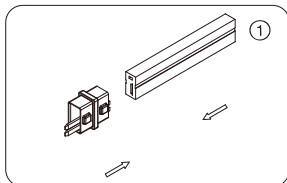


Press the fastener, let the bayonet slied into the corresponding slot.

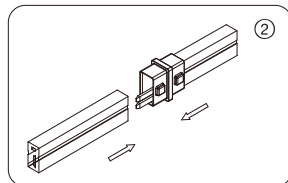


Check if nstallation is firm & in place.

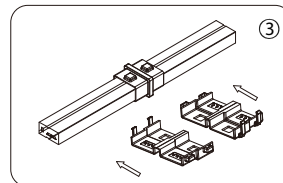
2. Installation of connector



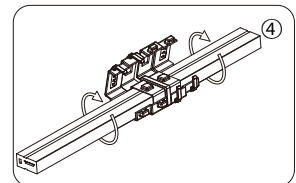
Push 1st part neon into the connector.



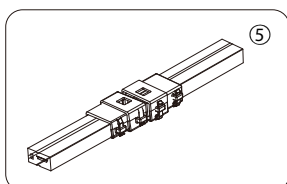
Push 2nd strip light part into another end.



Wrap the both sides of connector with the fastener.



Press the fastener, let the bayonet slied into the corresponding slot.



Check if installation is firm&in place



Note: We need to add glue to make the connection waterproof.

PACKING

N.W /CTN(KG)	QTY / CTN(reel)	G.W/CTN(KG)	CTN Size(mm)
0.58	30	18.7	500×260×380

