



Top View Series 1307 18W 24V

Product No. : FEN18WT-P7-G1 28HZ9x 24V210S 1307L05

Technical Details

Product No. FEN18WT-P7-G1 28HZ9x 24V210S 1307L05

Power	18W/M 5.49W/ft
Voltage	DC24V
CRI	90
Led Qty	210LEDs/M
Length/Reel	5M
Working Temperature	-25~60°C
Storage Temperature	-30~80°C
Voltage Range	23 ~25V dc
Reverse Voltage	25V dc

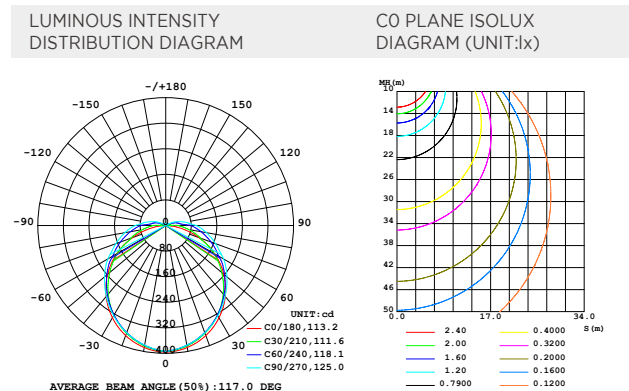
- Arc light-emitting surface, uniform light, not free
- Top emitting, meet a variety of top bending light shape
- IP67, achieve temporary immersion
- With high quality silicon, UV proof for outdoor application



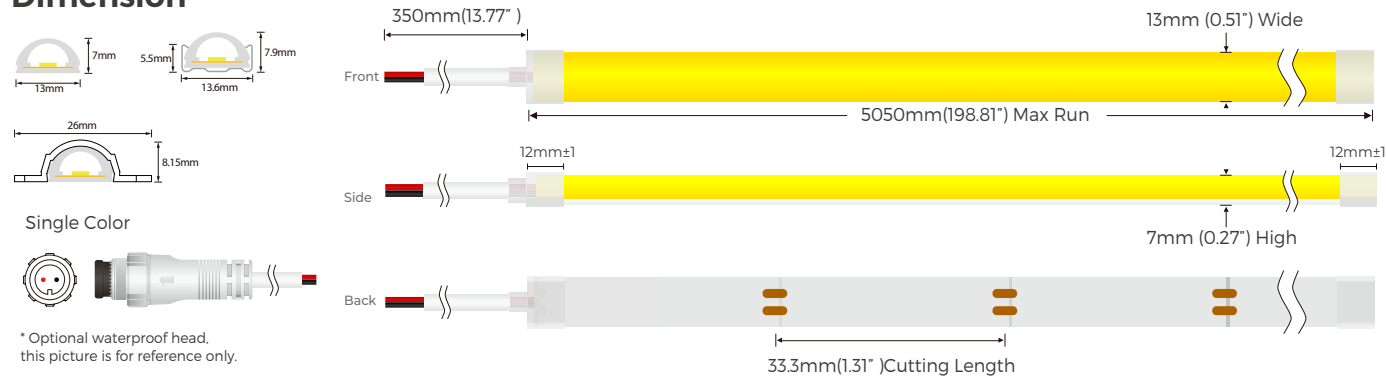
Lumens Per Meter

Color Temperature	
● 2700K	1640lm
● 3000K	1710lm
● 4000K	1680lm
● 6000K	1690lm

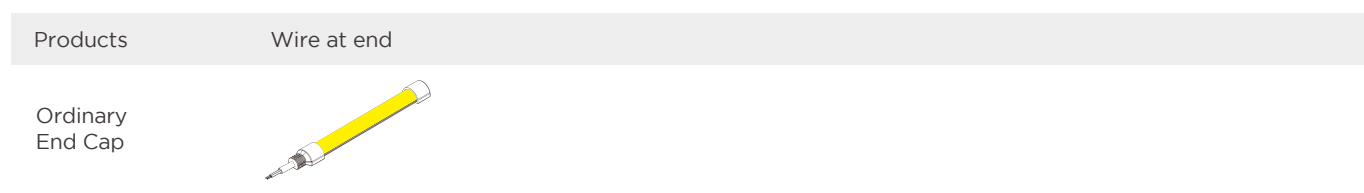
Light Distribution



Dimension



End cap

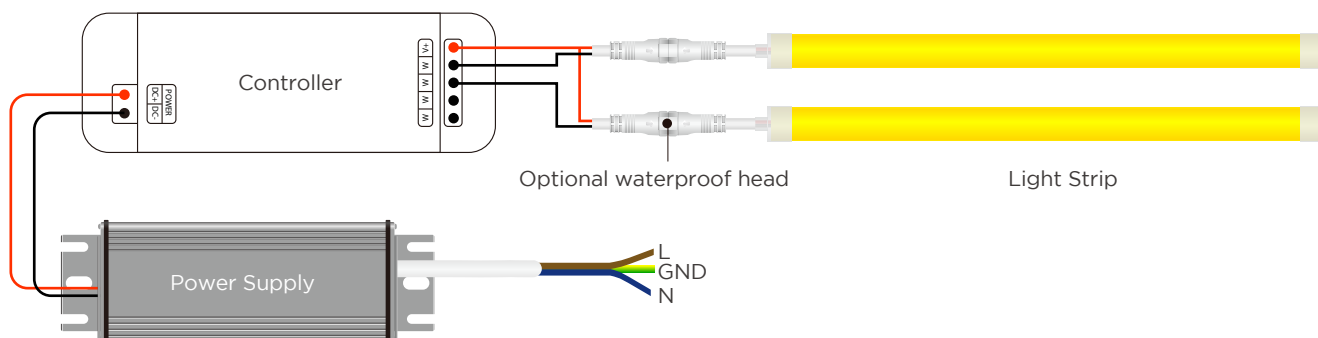


Accessories Specification

Name	Quantity	Note
1. End cap	4pc	
2. Front outlet end cap	2pc	*Optional
3. Clips	10pc	
4. Soft card	10pc	
5. Glue & Glue nozzle	2pc	
6. Screw	10pc	



Power Connection Diagram



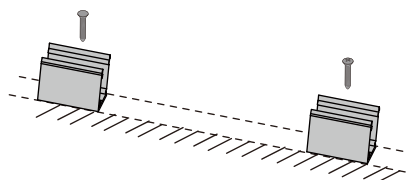
Recommended Power Supplies

Item Number	Description	Input Voltage	Output Voltage	Dimmable	Dimensions
DVH75-24-P7-G1LS AL	Waterproof Driver 75W	220-240	DC24V 3.12A	NO	165×60×36.5mm
DVH100-24-P7-G1 LS AL	Waterproof Driver 100W	220-240	DC24V 4.16A	NO	167×60×34.6mm
DVH150-24-P7-G1 LS AL	Waterproof Driver 150W	220-240	DC24V 6.25A	NO	167×60×34.6mm
DVH200-24-P7-G1LS AL	Waterproof Driver 200W	220-240	DC24V 8.33A	NO	216×65×39.5mm
DVH300-24-P7-G1 LS AL	Waterproof Driver 300W	220-240	DC24V 12.5A	NO	265×65×39.5mm

Installation

① Clip

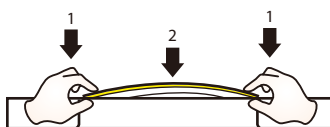
Fix the clips and aluminum profile via the screws.



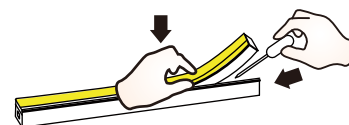
⚠ Suggestion: 2pcs clips per meter.

② Neon Series

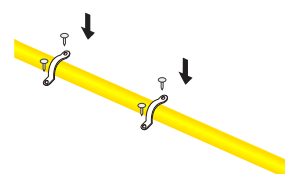
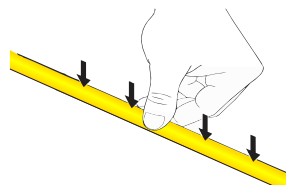
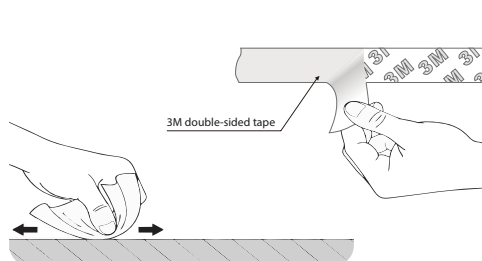
Simultaneously install the neon from both ends.



Should use tools to assist when remove the neon.



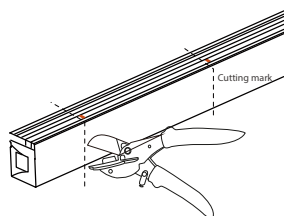
③ Soft card



Clean the environment part to be attached with a cloth, as shown in Figure 1, and then tear off the 3M tape on the back of the light belt, and finally stick the light belt on the clean place. Install the soft buckle to fix the neon strip.

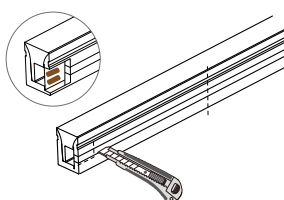
Cutting

① Cut the neon to be required length



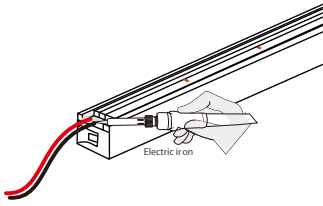
⚠ The minimum cutting unit is based on the cutting mark.

② Cut the side of neon, expose the soldering pad

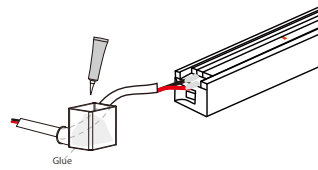


Soldering

① Solder the cable onto the PCB



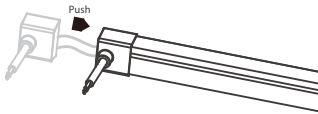
② Put the wire into and inject glue into the end cap



⚠ The amount of glue is about 1/3-1/2 of end cap.

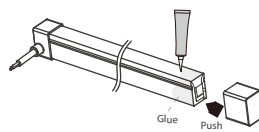
Intall end cap

① Push the end cap to wrapp end of neon

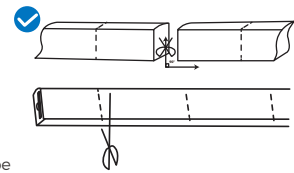


⚠ After the glue is injected, the neon needs to be laid flat for 2 hours to before other process.

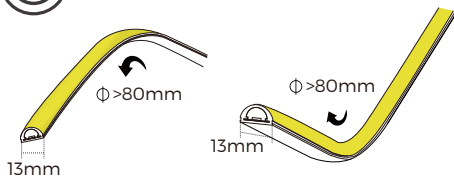
② Apply gel around the tail of neon and install the end cap



⚠ After the glue is injected, the neon needs to be laid flat for 2 hours to before project process. Glue will complete dry after 24hours.



Top bending series correct bending way.



PACKING

N.W /CTN(KG)	QTY / CTN(reel)	G.W/CTN(KG)	CTN Size(mm)
0.61	30	19.22	610×310×365



SHENZHEN LEDMY CO.,LTD

+86(755)27658410 sales@ledmy.com

Marketing Center: Room1503-1505, Block 2, Excellence City, Zhongkang Road, Futian District, Shenzhen City, Guangdong Province, PRC 518049.

DONGGUAN Manufacturing Center: LEDMY Industrial Park, Tongren Road, Longbeiling Industrial Zone, Tangxia Town, Dongguan City, Guangdong Province, PRC 523715.

JIANGMEN Manufacturing Center: NO. 3 Huahui Road, Waihai Street, Jianghai District, Jiangmen City, Guangdong Province, China, PRC 529000.