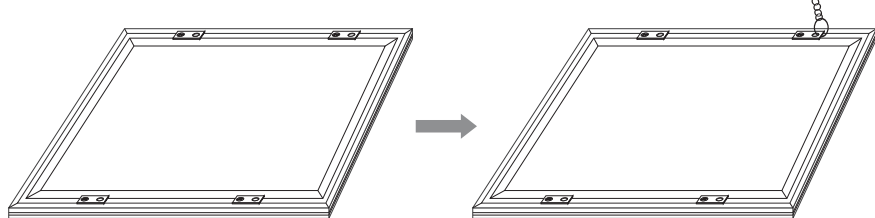


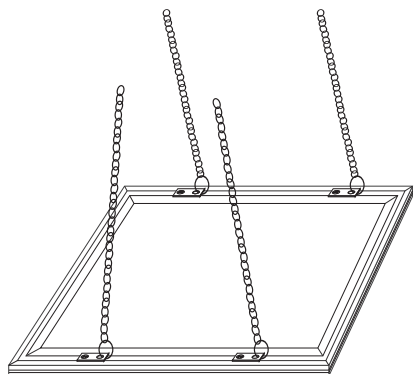
Panels installation instruction

Panels hang type (link chain) installation:



(Step1) Back view of the panel light

(Step2) Make the chain fixed to the installation drilling on the back of panel

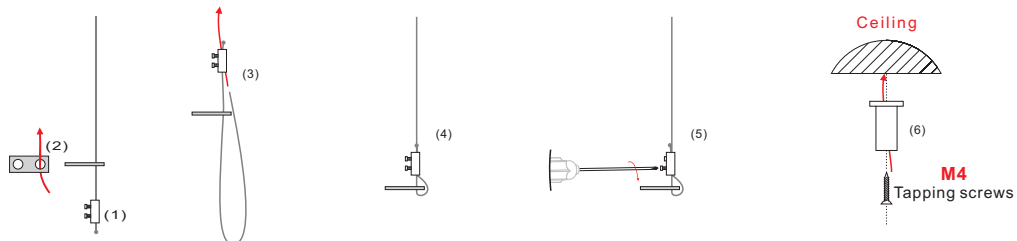


(Step3): The view after fixing

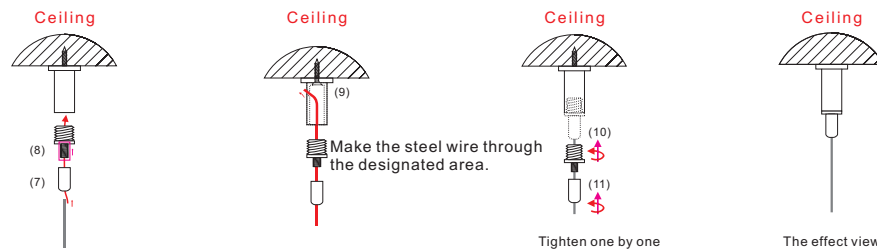


(Step4): The final installation effect view

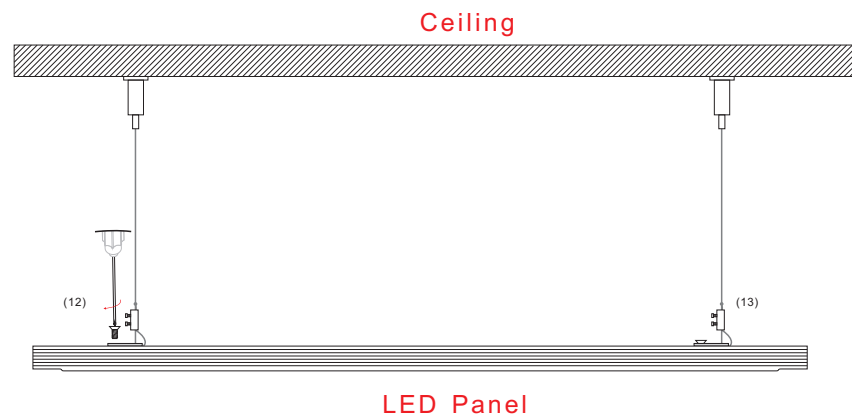
Panels hang type (steel wire rope) installation:



(6) Suggest to screw the M4 screw into the concrete wall

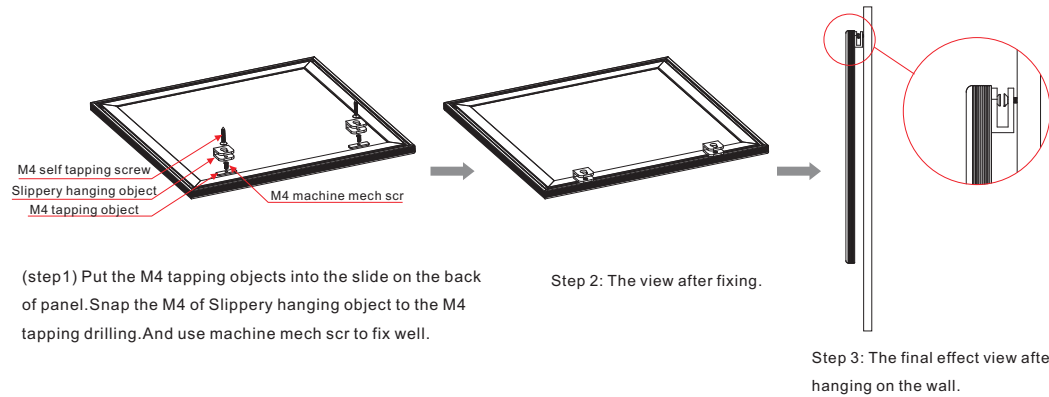


Push the steel wire through the bolt and the screw.

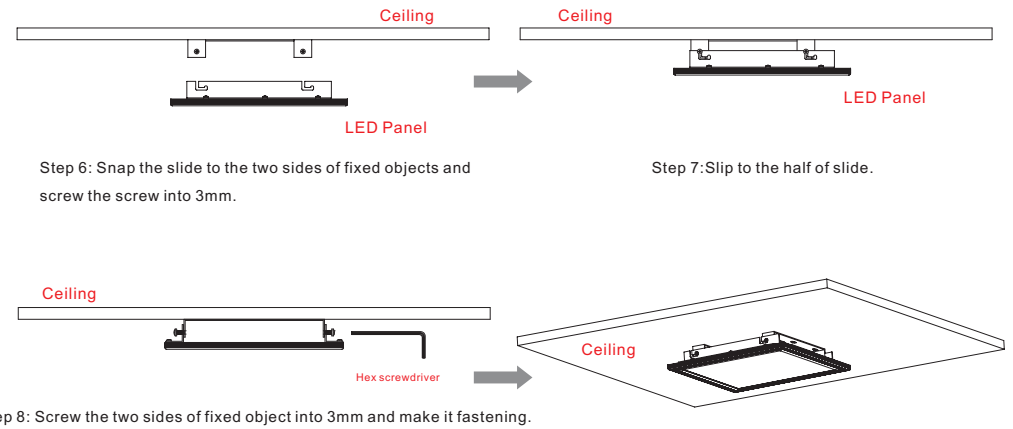
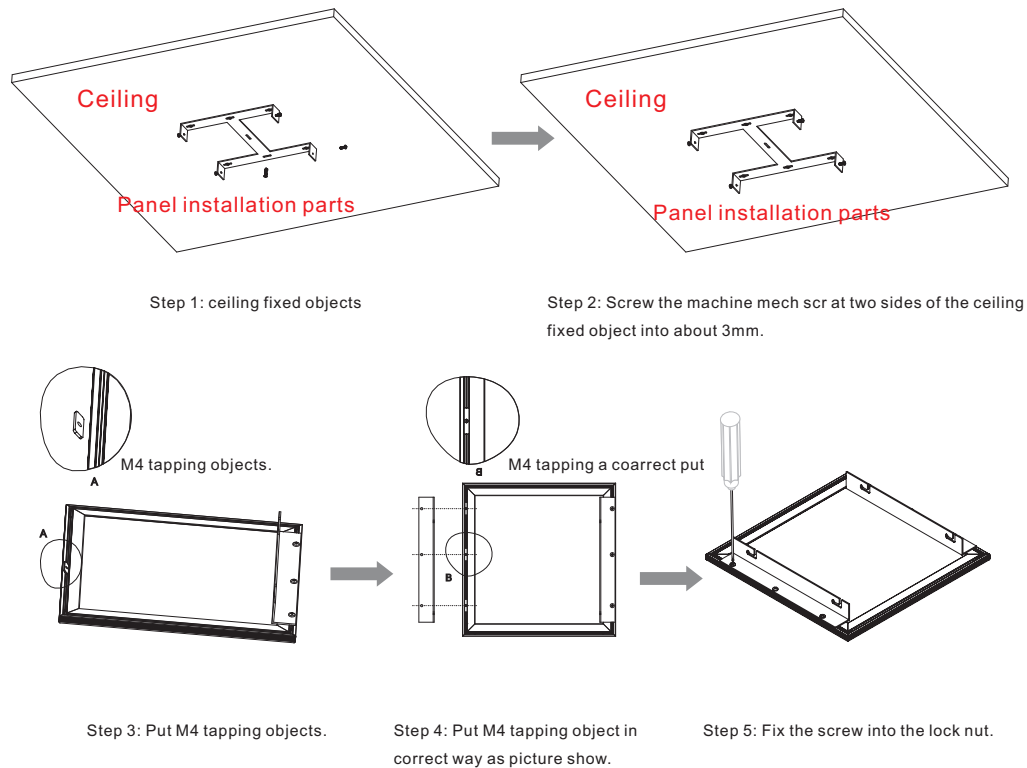


Effect view after installation

Panels wall hanging type installation :



Panels ceiling buckle type installation: :



Application:

This product is low power consumption, friendly to environment, full aluminum shell, good heat sinking, easy installation, noble and elegant. The upside types installation are suitable for office, meeting room, class room, marketplace, wash room, western restaurant, museum, exhibition hall, passageway, jewelry lighting, hotel, and home lighting, etc.

To use our products correct, please read the details as below:

1. Please connect the panels to the suitable drivers according the label on the panel.
2. DO NOT install the panels within or close to the inflammable objects .
- 3, Please make sure the power is off when you are installing the panels.
4. The panel lights are nonwaterproof , please make sure there would be no water go through.
5. When the lights work abnormally (like self-extinction, flicker), please check if the contact performance of lamp-socket with lamp holder and power voltage are OK or not . If there are no problem with the power and the connection , then you need to change new panels.
6. If there is any confusion about the instruction, please consult to a qualified engineer or call us for help, we would appreciate to serve you.