



Glorious life from LEDMY

www.ledmy.com

NEON STRIP

User Manual

V 2.0



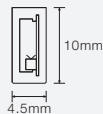
Marketing Center: Room 1503-1505, Block 2, Excellence City, Zhongkang Road,
Futian District, Shenzhen City, Guangdong Province, PRC 518049

Manufacturing Center: LEDMY Industrial Park, Tongren Road, Longbelling Industrial Zone, Tangxia Town,
Dongguan City, Guangdong Province, PRC 523715 Dongguan City, Guangdong Province, PRC 523715

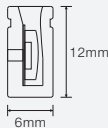


Sectional View

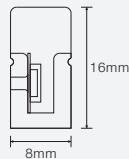
1. Side bending Series



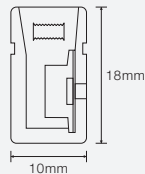
0410



0612

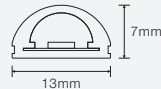


0816

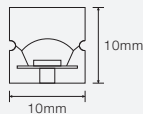


1018

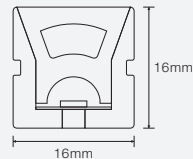
2. Top bending Series



1307



1010



1616

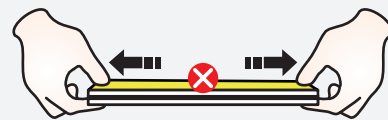
Attention



No Trampling

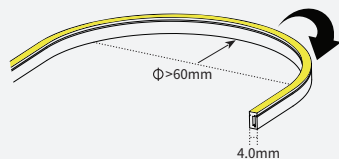


No Twisting



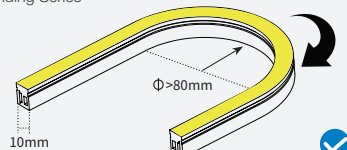
No Stretching

Luminous surface width < 10mm
Side bending Series



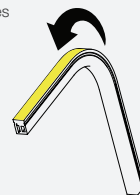
Correct bending way

Luminous surface width $\geq 10\text{mm}$
Side bending Series



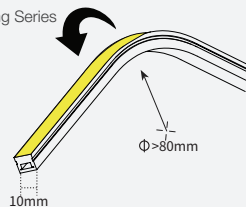
Correct bending way

Side bending Series



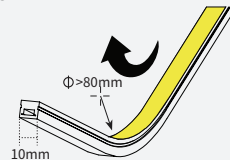
Wrong bending way

Top bending Series



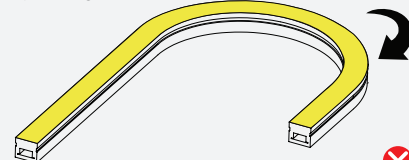
Correct bending way

Top bending Series



Correct bending way

Top bending Series



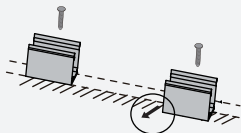
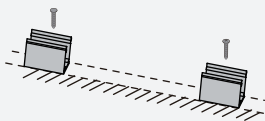
Wrong bending way

Intallation

1. Installation of clip

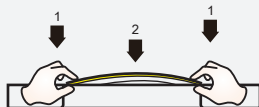
Fix the clips and aluminum profile via the screws

⚠ Suggestion: 2pcs clips per meter.

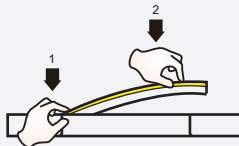


2. Installation of Neon

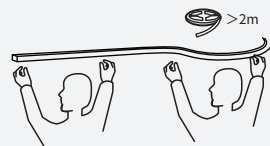
Simultaneously install the neon from both ends



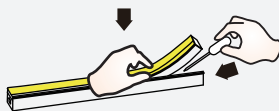
Prohibit installation from only one end



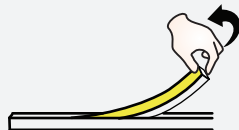
⚠ If neon is >2m, we recommend 2 peoples when installation



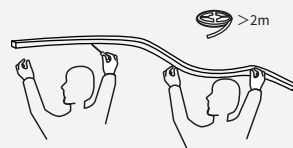
Should use tools to assist when remove the neon



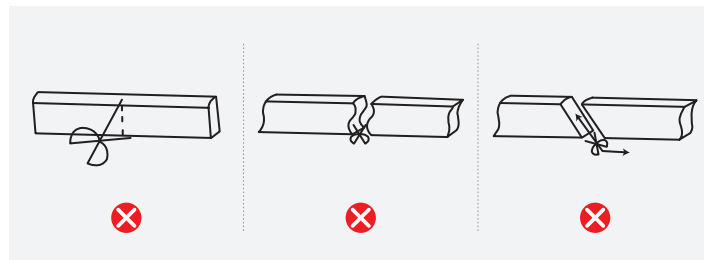
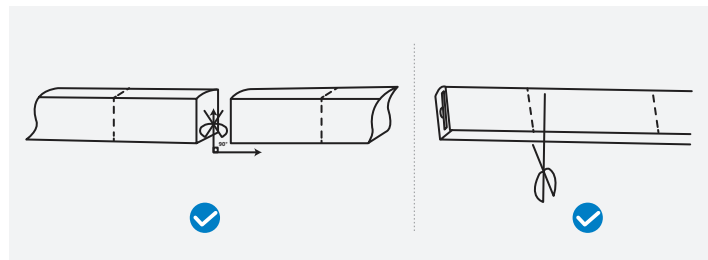
Do not pull the light strip directly when disassembling



⚠ If neon is >2m, we recommend 2 peoples when disassembling

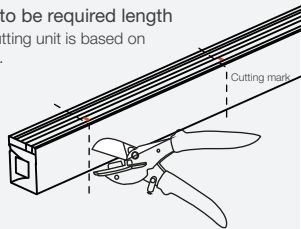


Cutting/Soldering/Intall end cap

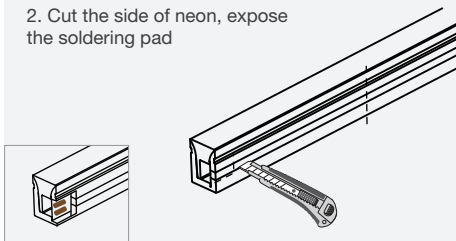


1. Cut the neon to be required length

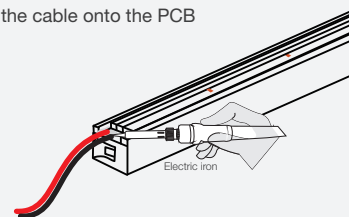
⚠ The minimum cutting unit is based on the cutting mark.



2. Cut the side of neon, expose the soldering pad

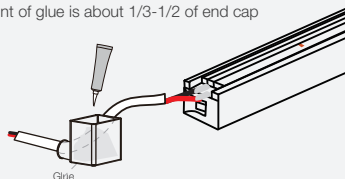


3. Solder the cable onto the PCB



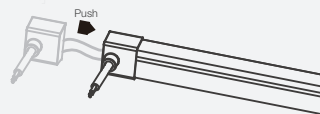
4. Put the wire into and inject glue into the end cap

⚠ The amount of glue is about 1/3-1/2 of end cap



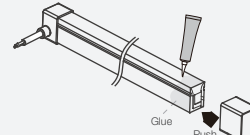
5. Push the end cap to wrap end of neon

⚠ After the glue is injected, the neon needs to be laid flat for 2 hours to before other process.



6. Apply gel around the tail of neon and install the end cap

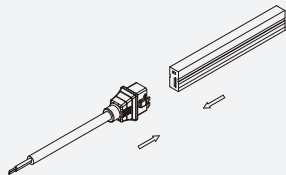
⚠ After the glue is injected, the neon needs to be laid flat for 2 hours to before project process. Glue will complete dry after 24hours.



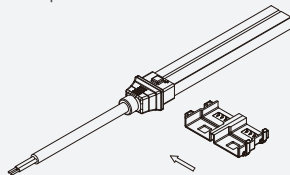
Installation of No-Soldering Connector

1. Installation of power cord connector

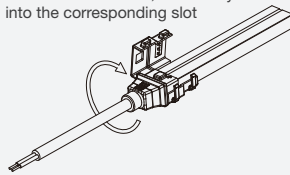
1. Push Neon into the connector



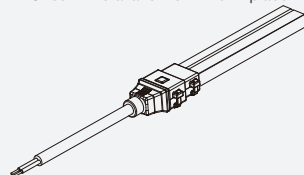
2. Wrap the connector with the faster



3. Press the fastener, let the bayonet slid into the corresponding slot

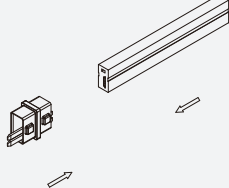


4. Check if nstallation is firm & in place

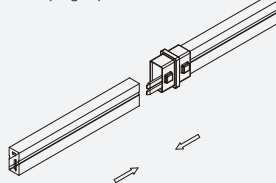


2. Installation of connector

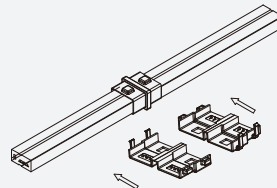
1. Push 1st part neon into the connector



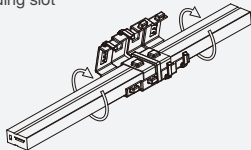
2. Push 2nd strip light part into another end



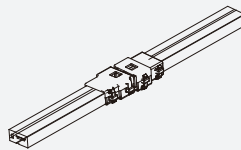
3. Wrap the both sides of connector with the fastener



4. Press the fastener , let the bayonet slid into the corresponding slot



5. Check if installation is firm&in place



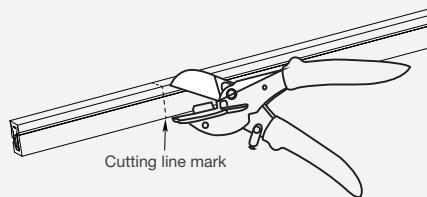
Note: We need to add glue to make the connection waterproof.

Neon Solderless Terminal Installation Instructions

1、 Installation Instructions

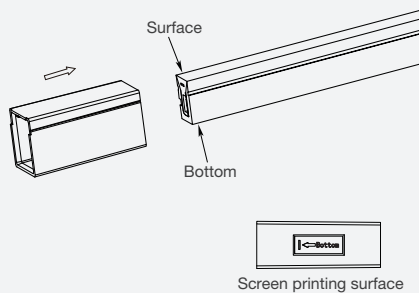
1.Preparation before installation: Cut neon strip

- ⚠ The cutting to be aligned the cutting line and the cutting cuts should be flat;
- ⚠ The PCB backing silk print lines need to be cut completely to avoid leaving the silk print line insulation to cause connection failure.



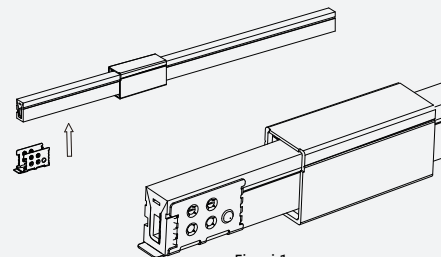
2.Put on transparent PC Cover

- ⚠ The screen print direction on the bottom of the PC Cover is aligned with the bottom of the neon light, as arrow direction.



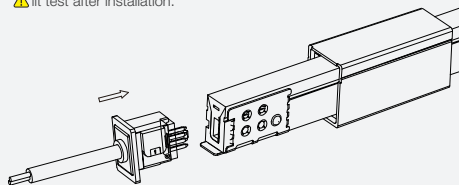
3.Install the stainless steel inner clips

- ⚠ Open the inner clips slightly to fit the neon strip, the end of the neon is about 1-2mm away from the edge of the inner clips. (figure 1)



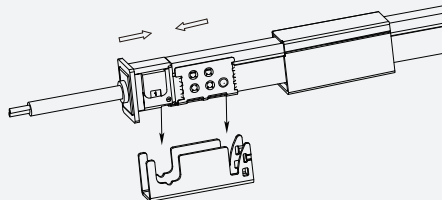
4.Push the end connector (with or without wire) into the neon strip

- ⚠ To check whether the waterproof silicone is flat and aligned, and the cut corner is opposite to the negative terminal of the end connector;
- ⚠ It test after installation.

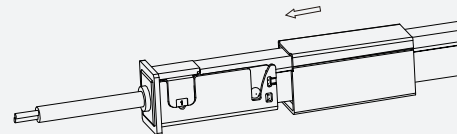


5.Inner clips installation

- ⚠ Align the left end connector and the right ending of the inner clips, and push into the middle stainless steel clips.



6.Install the transparent PC outer clips: tighten the outer clips as shown in the figure



Disclaimer

1. Install in accordance with national standards and local electrical codes.
2. This product must be installed and maintained by a qualified electrician.
3. This product can only match Class2 DC constant voltage driver . Please do not use it together if the driver does not meet Class 2 energy efficiency standard.
4. To avoid product damage , please pay attention to the positive and negative poles of the power line, do not connect them wrong, and confirm whether the voltage between the power supply and the product is the same.
5. In the actual application, 20% margin should be reserved for the power supply (only 80% power is recommended), so as to ensure the quantity of voltage driven products
6. In order to ensure the life and reliability of neon strip light , it is necessary to bend in the specified direction and radian (top light and side light are not the same) in accordance with the instructions
7. LED module and all its components can not bear mechanical pressure.
8. It is suggested to adopt parallel connection as a safe electric operation mode. It is not recommended to connect in series. Unbalanced pressure drop will cause dangerous overload and damage the LED module.
9. When installed on metal or other conductive surfaces, electrical insulation protection is required at the solder joint between the module and the mounting surface.
10. Pay attention to the ESD steps when installing the product.
11. Damage caused by corrosion will not be compensated for material defects. It is the responsibility of the user to provide appropriate protection against damage to the product by corrosive agents such as moisture, condensation and other harmful components.
12. The neon strip light should be stored in a dry and sealed environment. The recommended storage period is no more than one year. The working temperature is -20°C~+45°C, and the storage temperature is 0°C~+60°C.
13. This product is not resistant to vulcanization, and damage caused by vulcanization will not be compensated as a material defect. It is the responsibility of the user to provide appropriate protection against damage from harmful components of the sulphide.
14. The connector itself is not waterproof; if it is for waterproof usage, the connector should be glued before the connection.