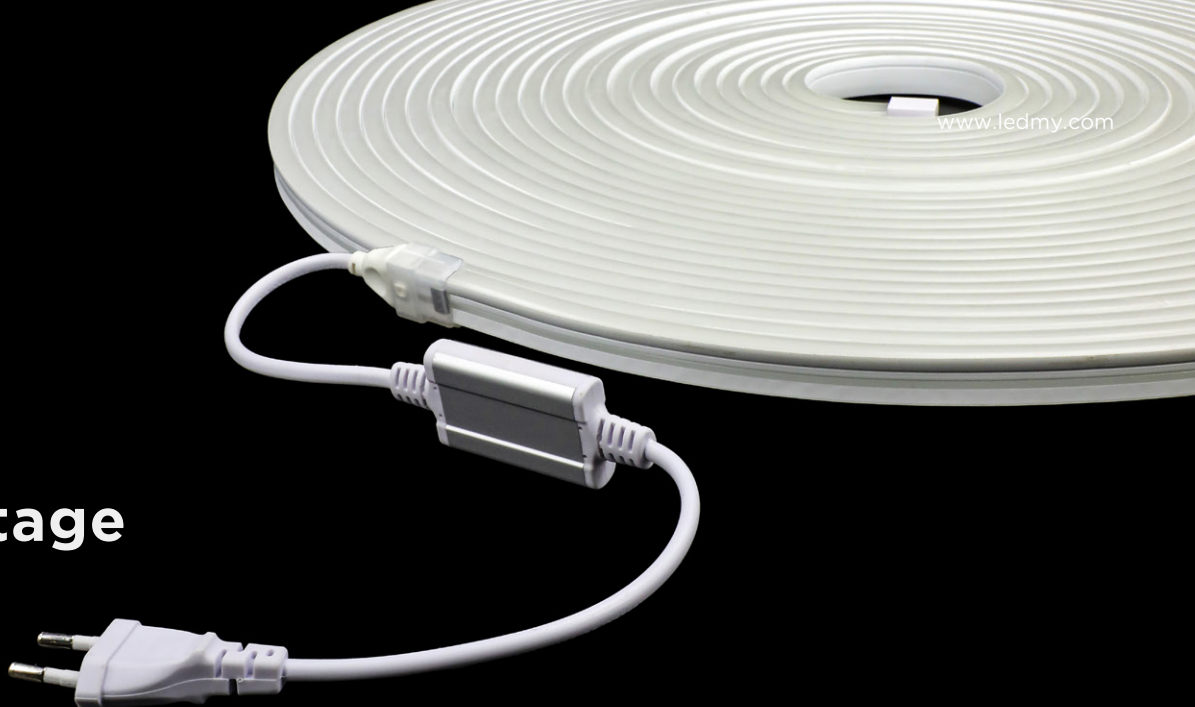


220V High voltage NEON



Side Bending Series 1018 14W 220V

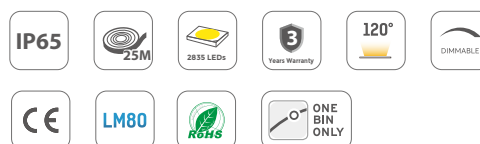
Product No. : FEN14W-P5-G1 28BL8x 220V120S12 1018L25

Technical Details

Product No. FEN14W-P5-G1 28BL8x 220V120S12 1018L25

Power	14W/M 4.39W/ft
Voltage	DC220V
CRI	80
Led Qty	120LEDs/M
Length/Reel	25M
Working Temperature	-25-55°C
Storage Temperature	-30-60°C
Voltage Range	AC 210-230V

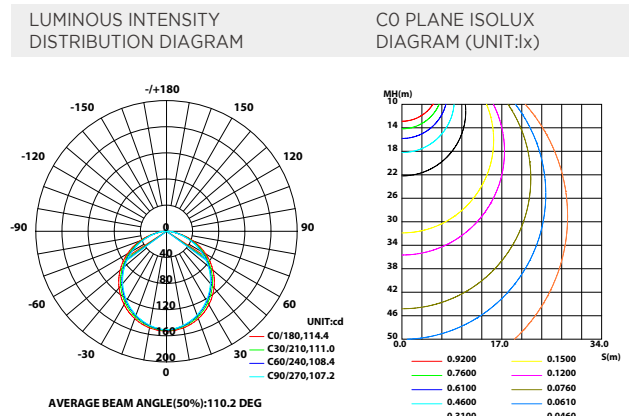
- 220V High voltage NEON.
- Stable and good quality High-Voltage Linear constant current solution.
- Ultra-long, up to 25 meters one end feed, side bending light shape.
- IP65, achieve temporary immersion.



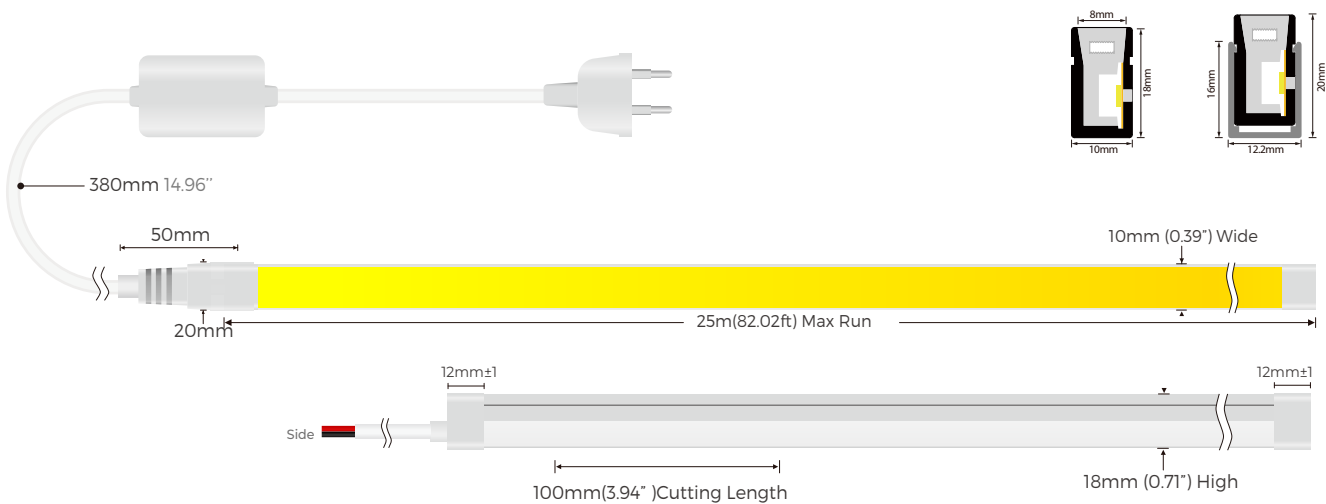
Lumens Per Meter

Color Temperature	
2700K	490lm
3000K	530lm
4000K	560lm
6000K	560lm

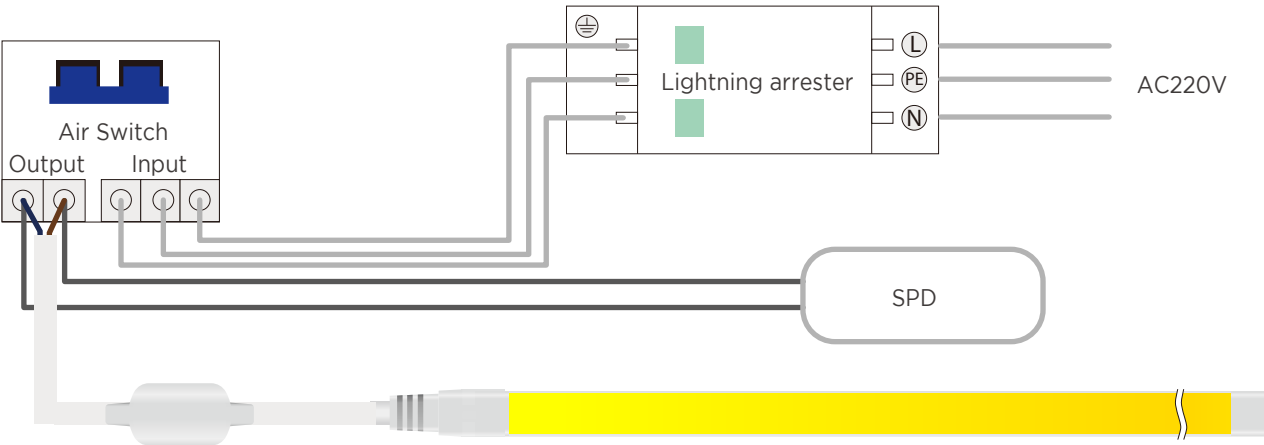
Light Distribution



Dimension



Power connection diagram
AC220V




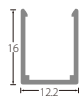

- Notice:
- 1. Any operation cannot be operated with electricity.
 - 2. When connecting or docking the high-voltage light strip, the docking position must be waterproof.
 - 3. Pay attention to protecting the LED strip light and avoid to let the sharp objects scratch the surface of light emitting.
 - 4. Avoid direct contact with high-temperature objects in the light -emitting area.
 - 5. Strictly forbid to short -distance twist the strip light, pay attention to reserving a curved radius of more than 2cm at the corner and turning point.

Accessories Specification

Name	Quantity	Note
1. End cap	4pc	
2. Clips	10pc	
3. Glue & Glue nozzle	2pc	
4. Screw	10pc	



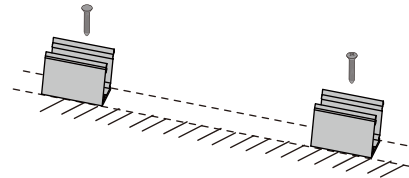
Aluminum Profile List

Product NO.	Size	Section diagram	install
	12.2×16mm		

Installation

① Clip

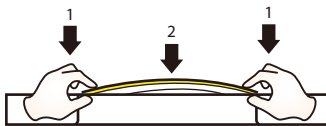
Fix the clips and aluminum profile via the screws.



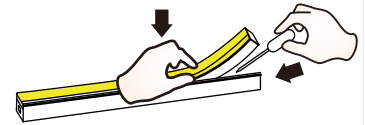
⚠ Suggestion: 2pcs clips per meter.

② Neon Series

Simultaneously install the neon from both ends.

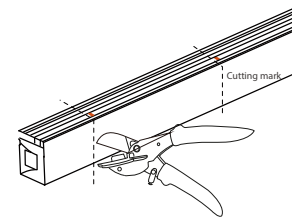


Should use tools to assist when remove the neon.



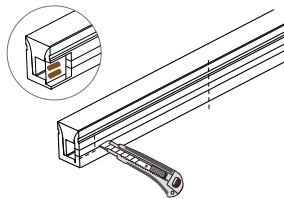
Cutting

① Cut the neon to be required length



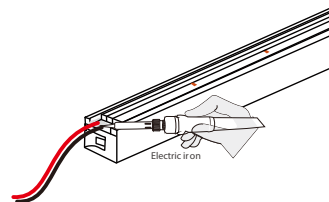
⚠ The minimum cutting unit is based on the cutting mark.

② Cut the side of neon, expose the soldering pad

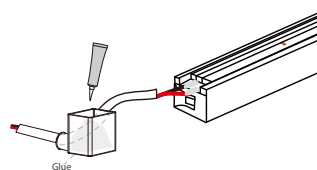


Soldering

① Solder the cable onto the PCB



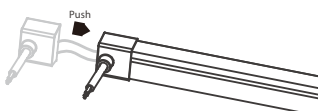
② Put the wire into and inject glue into the end cap



⚠ The amount of glue is about 1/3-1/2 of end cap.

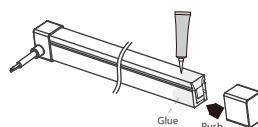
Intall end cap

① Push the end cap to wrapp end of neon

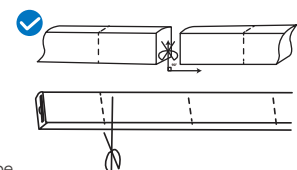


⚠ After the glue is injected, the neon needs to be laid flat for 2 hours to before other process.

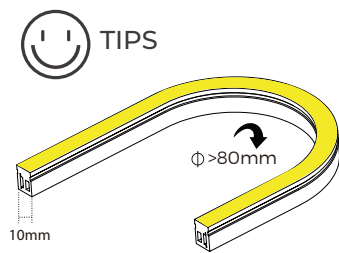
② Apply gel around the tail of neon and install the end cap



⚠ After the glue is injected, the neon needs to be laid flat for 2 hours to before project process. Glue will complete dry after 24hours.



Side bending series correct bending way.



PACKING

N.W /CTN(KG)	QTY / CTN(reel)	G.W/CTN(KG)	CTN Size(mm)
/	/	/	/