

## IP68 COB Series 15W 24V 480LEDs

Product No. : FH15W-P8-G1 COB9X 24V480S W10RL05



- 5 Years warranty.
- Bigger Chip, Long life span and brighter.
- High Efficacy, RA>90, up to 100lm/W.
- More Stable, No quality risk of lap welding.
- Dots-free, uniform lights, 180° light-emitting, 3.3mm luminous surface.

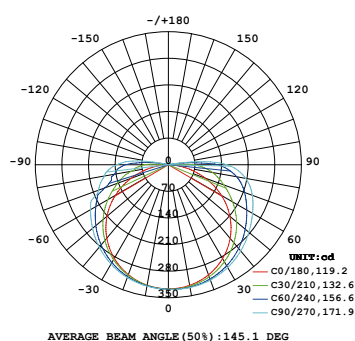


### TECHNICAL DETAILS

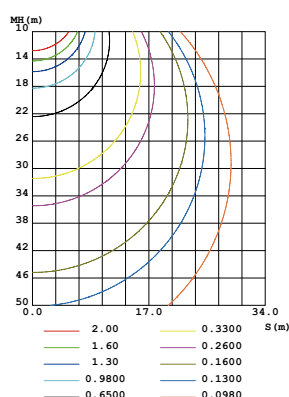
Product No.	FH15W-P8-G1 COB9X 24V480S W10RL05
Power	15W/M 4.57W/ft
Voltage	DC24V
CRI	90
Led Qty	480LEDs/M
Length/Reel	5M
Working Temperature	-20~50°C
Storage Temperature	-30~80°C
Voltage Range	23 ~25V dc
Reverse Voltage	25V dc

### LIGHT DISTRIBUTION

LUMINOUS INTENSITY DISTRIBUTION DIAGRAM



CO PLANE ISOLUX DIAGRAM (UNIT:lx)

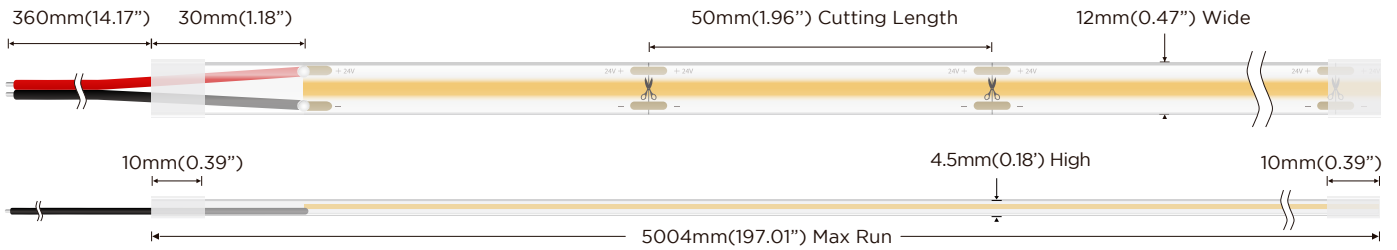


### LUMENS PER METER

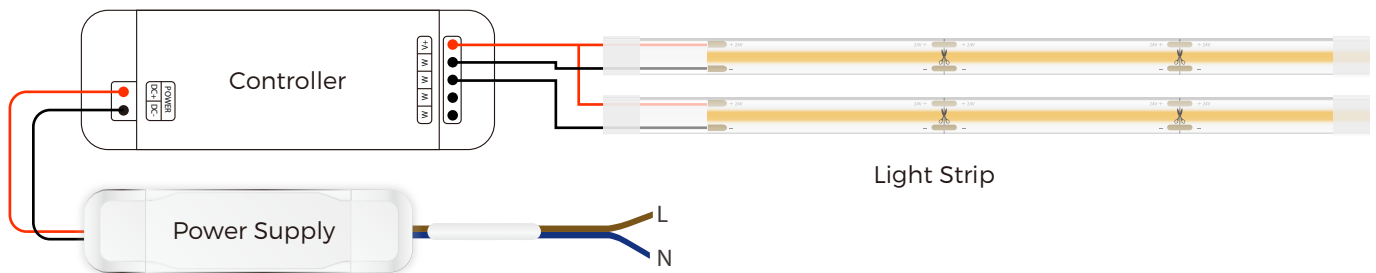
#### Color Temperature

2700K	1215lm
3000K	1245lm
4000K	1260lm
6500K	1260lm

## DIMENSION



## POWER CONNECTION DIAGRAM



## RECOMMENDED POWER SUPPLIES

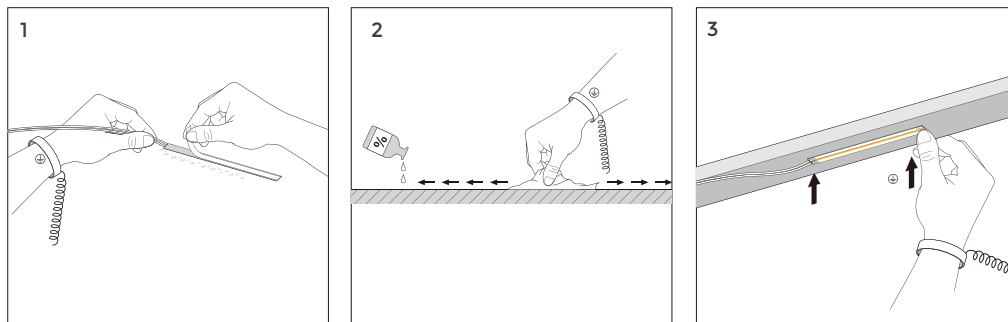
Item Number	Description	Input Voltage	Output Voltage	Dimmable	Dimensions
DVH30-24-P0-G1 CP PC	Non-waterproof driver 30W	220-240	DC24V 1.25A	NO	160×42×30
DVH60-24-P0-G1 CP PC	Non-waterproof driver 60W	220-240	DC24V 2.5A	NO	187×45×30.5
DVH75-24-P0-G1 CP PC	Non-waterproof driver 75W	220-240	DC24V 3.125A	NO	187×45×30.5
DVH120-24-P0-G1 CP PC	Non-waterproof driver 120W	220-240	DC24V 5.0A	NO	268×45×30.5
DVH150-24-P0-G1 CP PC	Non-waterproof driver 150W	220-240	DC24V 6.25A	NO	268×45×30.5

## ALUMINUM PROFILE LIST

	Section diagram	install	Product NO.	Slot size	Cover	PCB Width	Power
			15mm×7mm	-	Transarent/Milk	≤10mm	≤10W/M
			24mm×15mm	21mm×16mm	Transarent/Milk	≤12mm	≤18W/M
			17mm×15mm	-	Transarent/Milk	≤12mm	≤16W/M
			16mm×16mm	-	Transarent/Milk	≤10mm	≤15W/M
			16mm×16mm	-	Transarent/Milk	≤10mm	≤15W/M

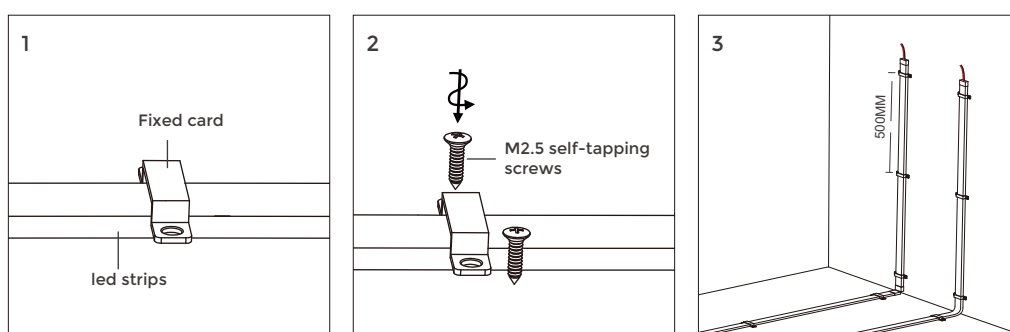
## INSTALL

### IP20



Clean the environment part to be attached with a cloth, as shown in Figure 1, and then tear off the 3M tape on the back of the light belt, and finally stick the light belt on the clean place.

### IP65/IP68

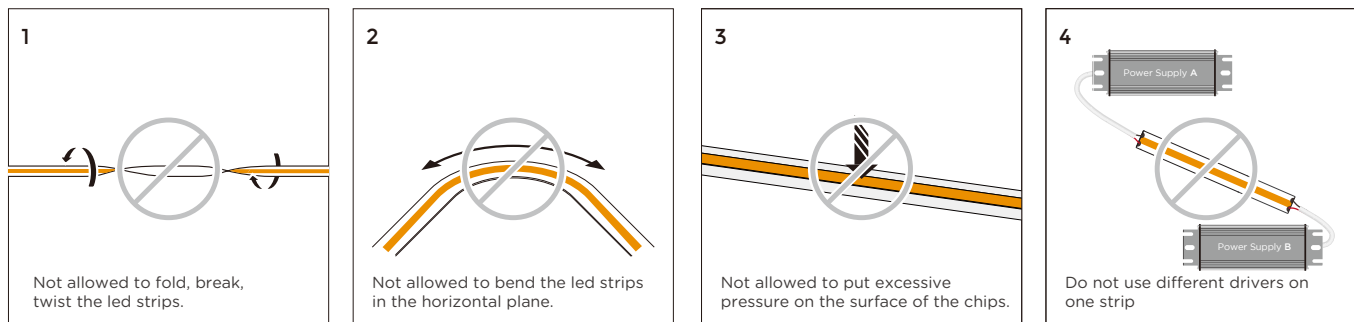


Note: If rated power >15W/m, please make sure the installation environment with well-ventilated and good heat dissipation conditions.

Warning: Do not install it in a closed space and forbidden to cover it.

Please refer to the installation manual for details

## APPLICAITON NOTE



## PACKING

N.W /CTN(KG)	QTY / CTN(reel)	G.W/CTN(KG)	CTN Size(cm)

SHENZHEN LEDMY CO.,LTD  
+86(755)27658410 sales@ledmy.com

Marketing Center: Room1503-1505, Block 2, Excellence City, Zhongkang Road, Futian District, Shenzhen City, Guangdong Province, PRC 518049  
Manufacturing Center: LEDMY Industrial Park, Tongren Road, Longbeiling Industrial Zone, Tangxia Town, Dongguan City, Guangdong Province, PRC 523715 Dongguan City, Guangdong Province, PRC 523715