

Instruction for LED Rigid Bars

Connection diagram :

Diagram for single color rigid bar:

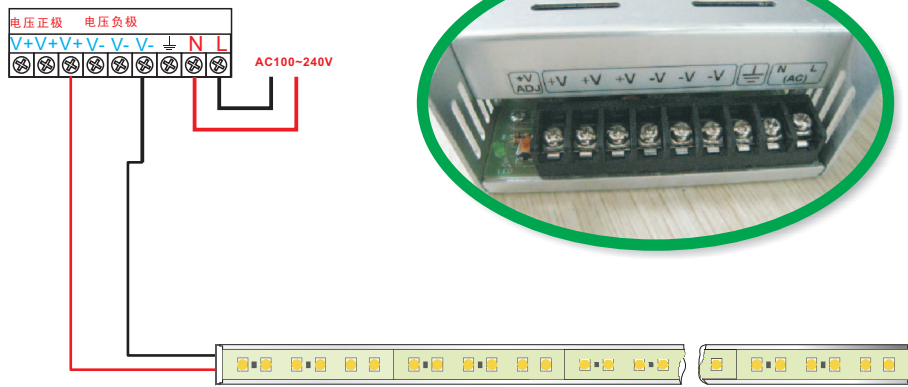
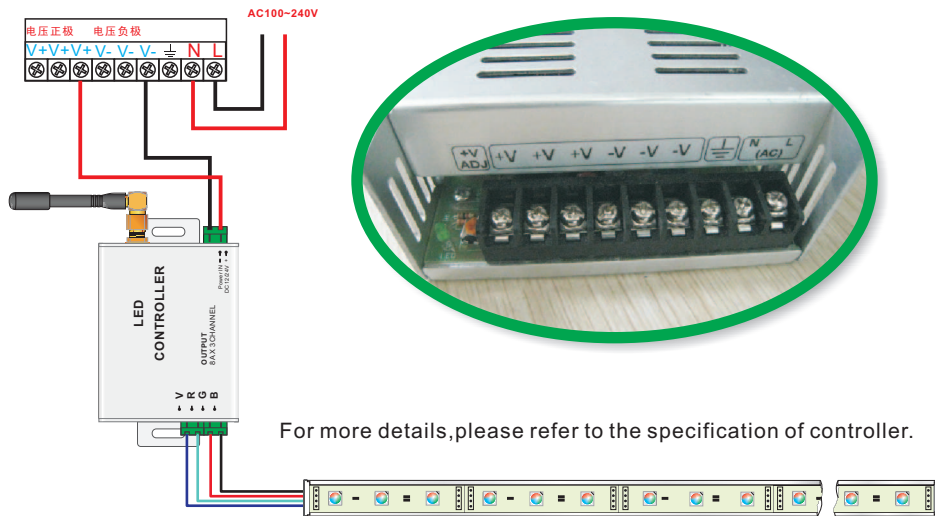
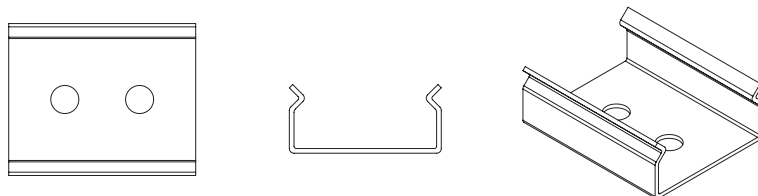


Diagram for RGB rigid bar:

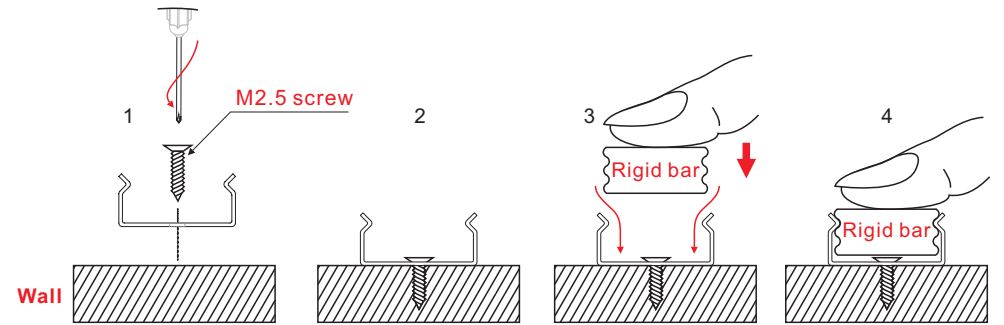


Installation and accessories:

Clips:

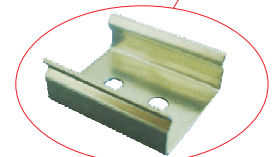


Installation steps:



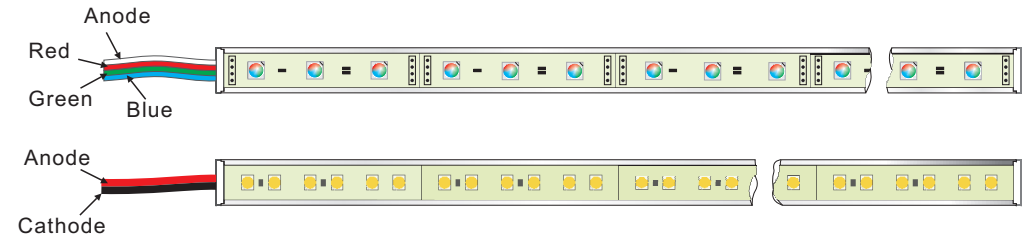
Please use M2.5mm Screw to install the clips, and make sure it is put in line.

Model no: LD-RD-AL-CLIP



This clip is used to fix the Bars

Instruction for rigid bar:



The rigid bar is cuttable on the cutting mark, and it is easy to connect. Remind: for single color rigid bar, red cable is for anode, and for RGB strip, white cable is for anode.

Notes:

1. This product should be used at the rated voltage which showed on the package. Do not use it at a higher or lower voltage.
2. Do not install or use it inside combustibles. It should not be covered by insulation materials or similar materials in any situation.
3. For personal safety, please switch off the power supply before installation or replacement.
4. If there is an anomaly, such as self-extinction or flicker, please check the power voltage and the contact performance of lamp socket and plug. If the problem remains unsolved, please replace a new Rigid bars.
5. You are suggested using the LED drivers we offered for Rigid bars.
6. Any question about the instruction, please consult the engineer with certificates or contact us directly. Your E-mail or calling will be welcomed.