



220V COB High Voltage / 8W

Product No. : FE08W-P5-G2 COB7x 220V288S 1206L50

Technical Details

Product No. FE08W-P5-G2 COB7x 220V288S 1206L50

Power	8W/m 2.44W/ft
Voltage	AC220V
CRI	70
Led Qty	288LEDs/M 36LEDs/ft
Length/Reel	50m 164.04ft
Working Temperature	-25-55°C
Storage Temperature	-30-60°C
Voltage Range	AC 210-230V

- Perfect color control.
- Cuttable, large bending degree,easy installation.
- Ultra-long, up to 50 meters one end feed.

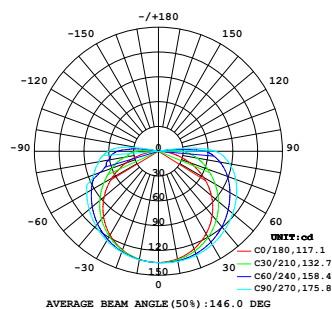


Lumens

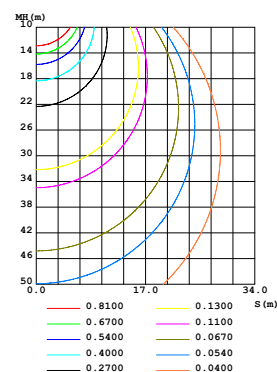
Color Temperature	
2700K	525lm/m
3000K	560lm/m
4000K	600lm/m
6500K	600lm/m

Light Distribution

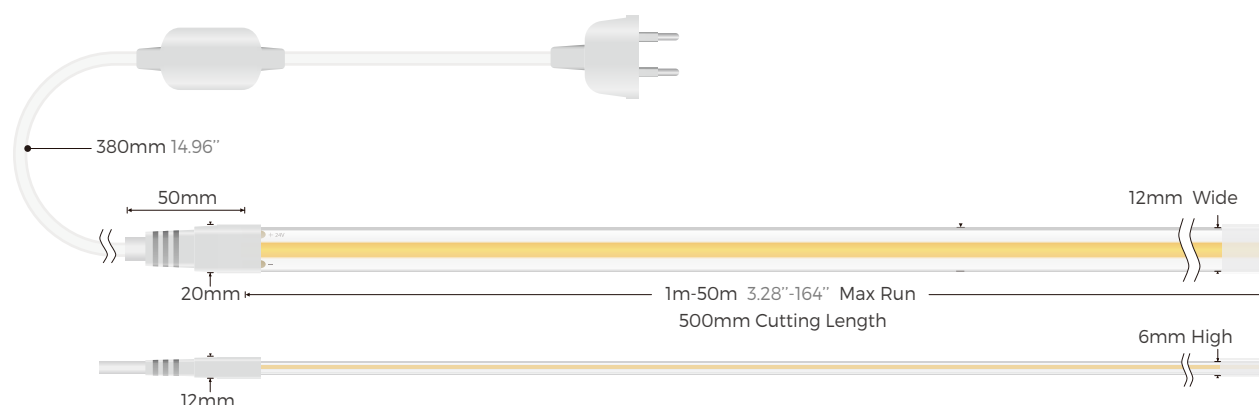
LUMINOUS INTENSITY DISTRIBUTION DIAGRAM



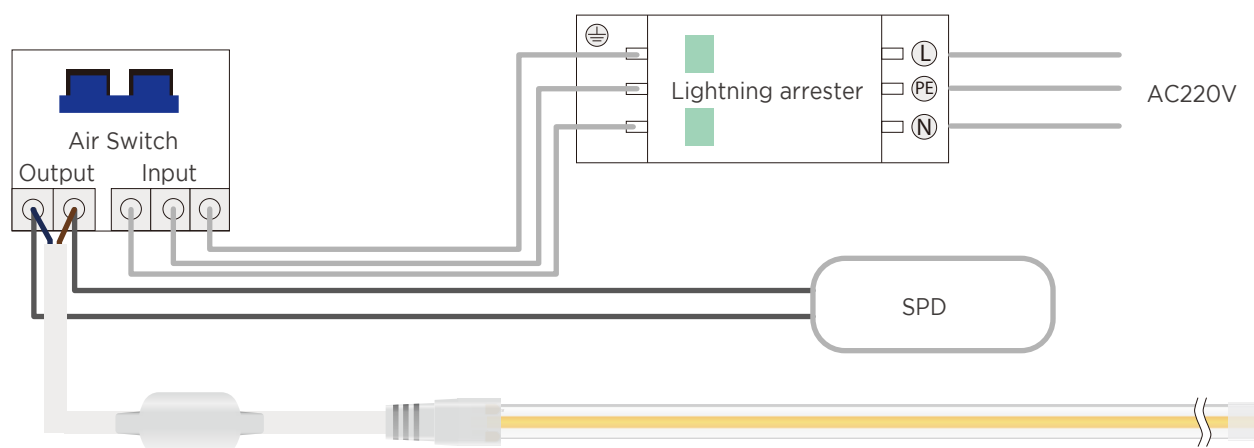
CO PLANE ISOLUX DIAGRAM (UNIT:lx)



Dimension



Power connection diagram AC220V

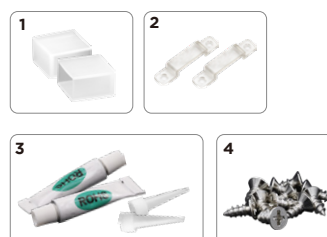


Notice:

1. Any operation cannot be operated with electricity.
2. When connecting or docking the high-voltage light strip, the docking position must be waterproof.
3. Pay attention to protecting the LED strip light and avoid to let the sharp objects scratch the surface of light emitting.
4. Avoid direct contact with high-temperature objects in the light -emitting area.
5. Strictly forbid to short -distance twist the strip light, pay attention to reserving a curved radius of more than 2cm at the corner and turning point.

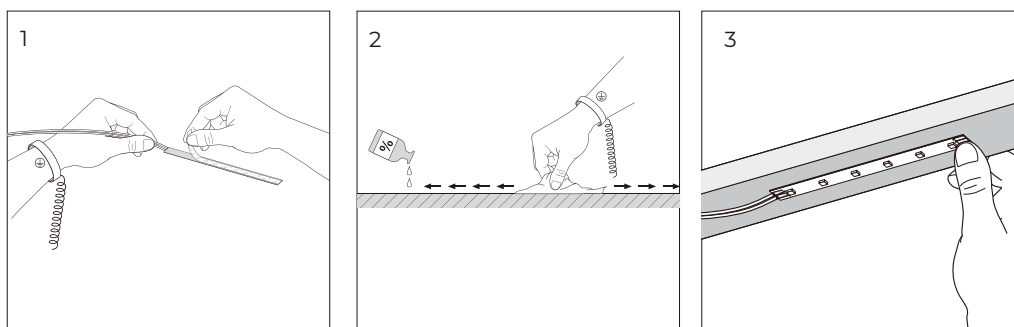
Accessories Specification

Name	Quantity	Note
1. End cap	5pc	
2. Clips	10pc	
3. Glue & Glue nozzle	2pc	
4. Screw	20pc	



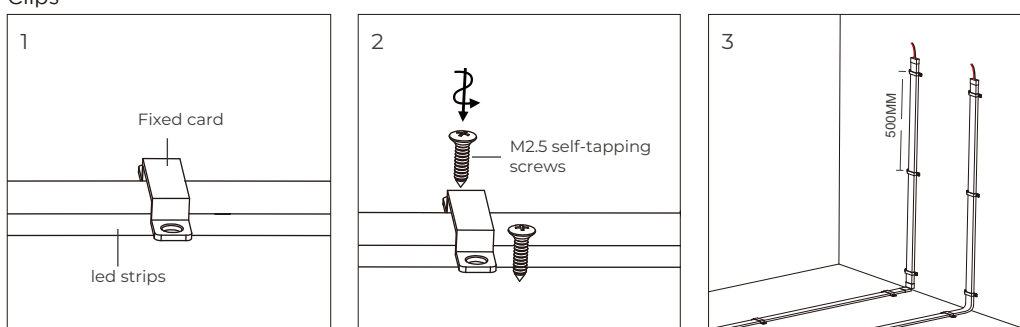
INSTALLATION

Paste



Clean the environment part to be attached with a cloth, as shown in Figure 1, and then tear off the 3M tape on the back of the light belt, and finally stick the light belt on the clean place.

Clips



PACKING

N.W /CTN(KG)	QTY / CTN(reel)	G.W/CTN(KG)	CTN Size(mm)
2.53	2	5.8	280×280×245

