

Constant current solution

220V High Voltage Strips / 12W

Product No. : FE12W-P5-G2 28BL8x 220VC120S12 1465L50

Technical Details

Product No. FE12W-P5-G2 28BL8x 220VC120S12 1465L50

Power	12W/m 3.66W/ft
Voltage	AC220V
CRI	80
Led Qty	120LEDs/M 36LEDs/ft
Length/Reel	50m 164.04ft
Working Temperature	-25-55°C
Storage Temperature	-30-60°C
Voltage Range	AC 210-230V

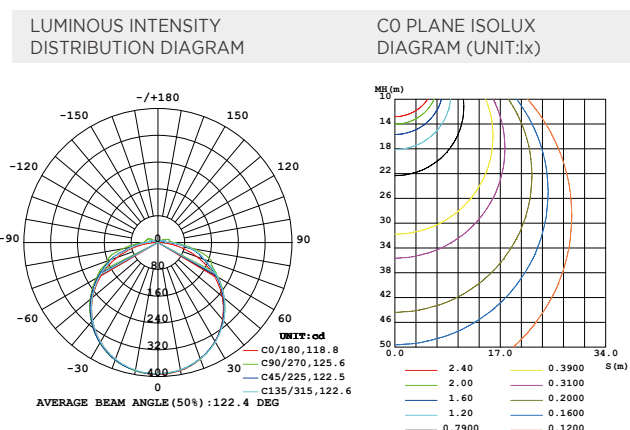
- Perfect color control.
- Stable and good quality High-Voltage Linear constant current solution.
- 3M tape, Cuttable, large bending degree, easy installation.
- Ultra-long, up to 50 meters one end feed.



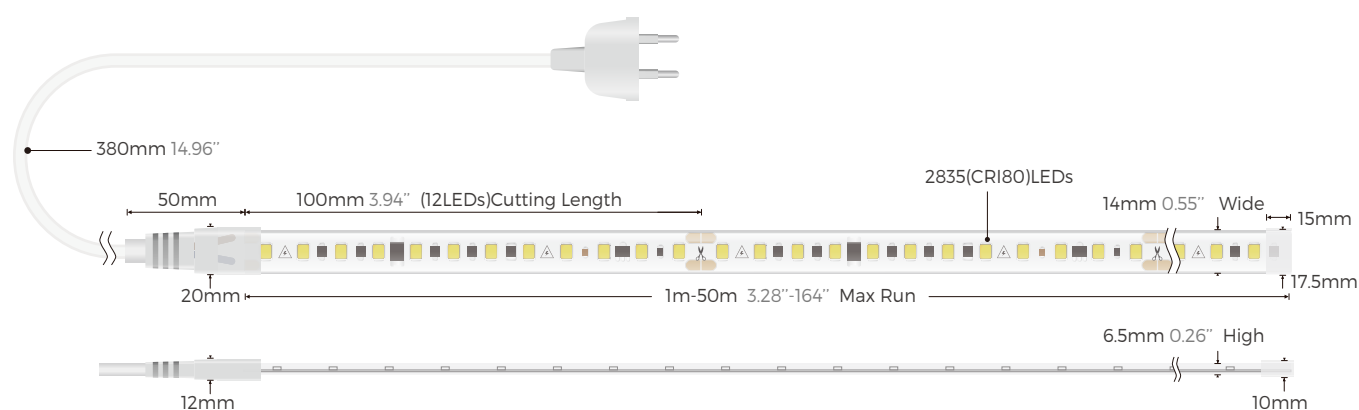
Lumens

Color Temperature		
● 2700K	1380lm/m	421lm/ft
● 3000K	1440lm/m	439lm/ft
● 4000K	1500lm/m	457lm/ft
● 6000K	1500lm/m	457lm/ft

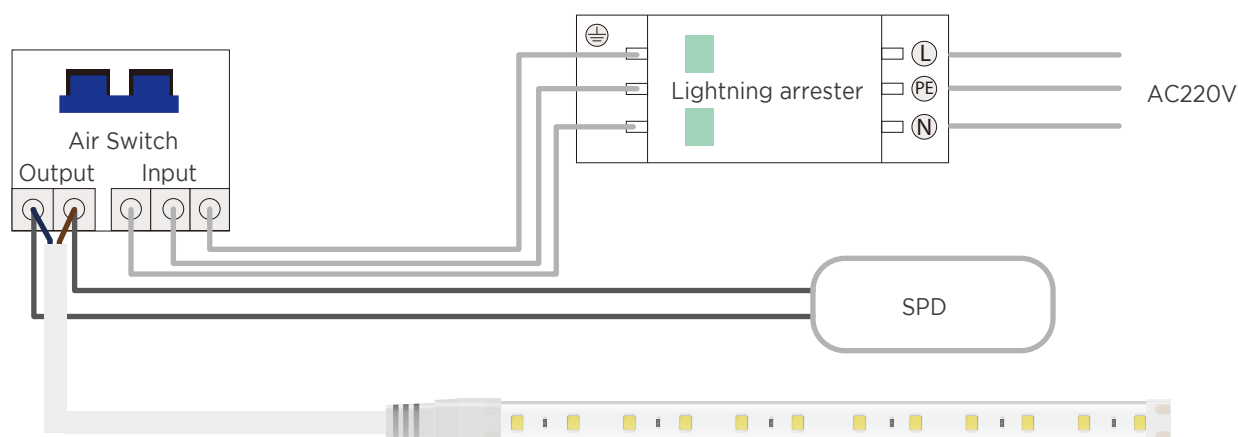
Light Distribution



Dimension



Power connection diagram AC220V

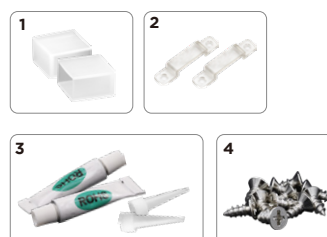


Notice:

1. Any operation cannot be operated with electricity.
2. When connecting or docking the high-voltage light strip, the docking position must be waterproof.
3. Pay attention to protecting the LED strip light and avoid to let the sharp objects scratch the surface of light emitting.
4. Avoid direct contact with high-temperature objects in the light -emitting area.
5. Strictly forbid to short -distance twist the strip light, pay attention to reserving a curved radius of more than 2cm at the corner and turning point.

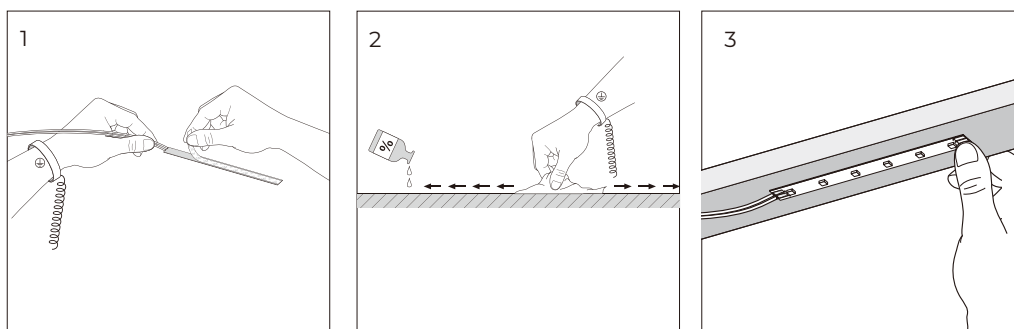
Accessories Specification

Name	Quantity	Note
1. End cap	5pc	
2. Clips	10pc	
3. Glue & Glue nozzle	2pc	
4. Screw	20pc	



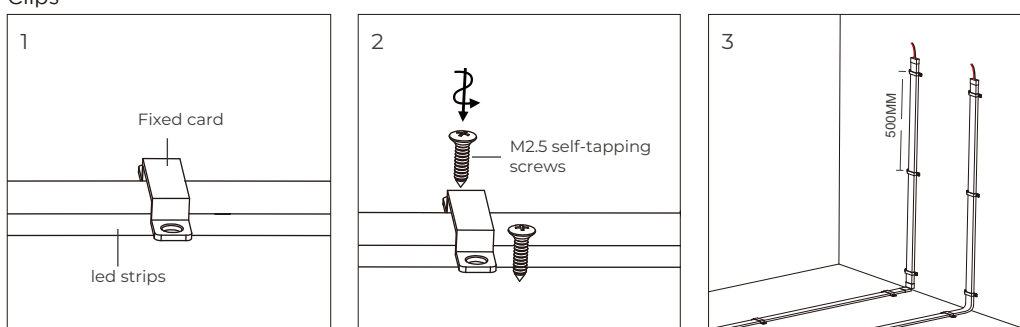
INSTALLATION

Paste



Clean the environment part to be attached with a cloth, as shown in Figure 1, and then tear off the 3M tape on the back of the light belt, and finally stick the light belt on the clean place.

Clips



PACKING

N.W /CTN(KG)	QTY / CTN(reel)	G.W/CTN(KG)	CTN Size(mm)
4.235	1	5.4	280×280×245

