

NEON IP68 Series-Side Bending / 10x18mm 14W 24V

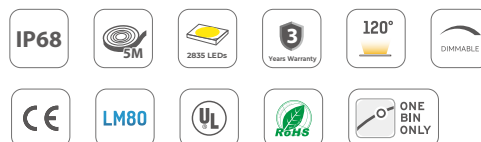
Product No. : FEN14WS-P8-G2 28HZ9x 24V120S 1018L05

Technical Details

Product No. FEN14WS-P8-G2 28HZ9x 24V120S 1018L05

Power	14W/M 4.39W/ft
Voltage	DC24V
CRI	90 (2835)
Led Qty	120LEDs/M 37LEDs/ft
Length/Reel	5M 16.56ft
Working Temperature	-25-60°C
Storage Temperature	-30-80°C
Voltage Range	23 ~25V dc
Reverse Voltage	25V dc

- The product has a water-repellent rating of IP68
- Equipped with a 2835 LED light source that is both bright and energy-efficient.

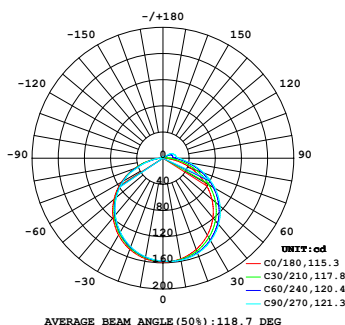


Lumens

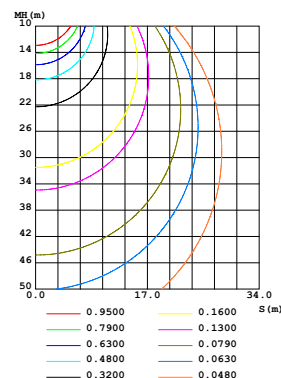
Color Temperature		
2700K	520lm/m	159lm/ft
3000K	578lm/m	176lm/ft
4000K	590lm/m	180lm/ft
6000K	605lm/m	184lm/ft

Light Distribution

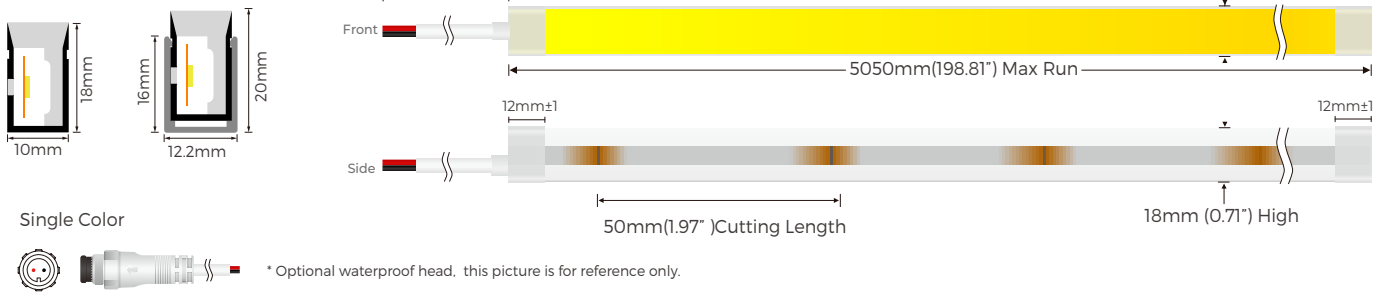
LUMINOUS INTENSITY DISTRIBUTION DIAGRAM



C0 PLANE ISOLUX DIAGRAM (UNIT:lx)



Dimension

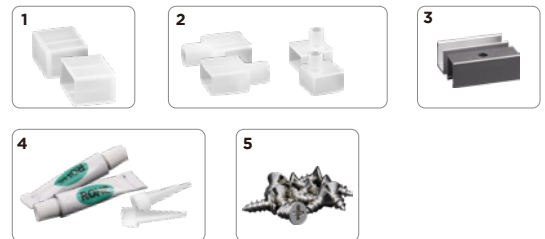


End cap

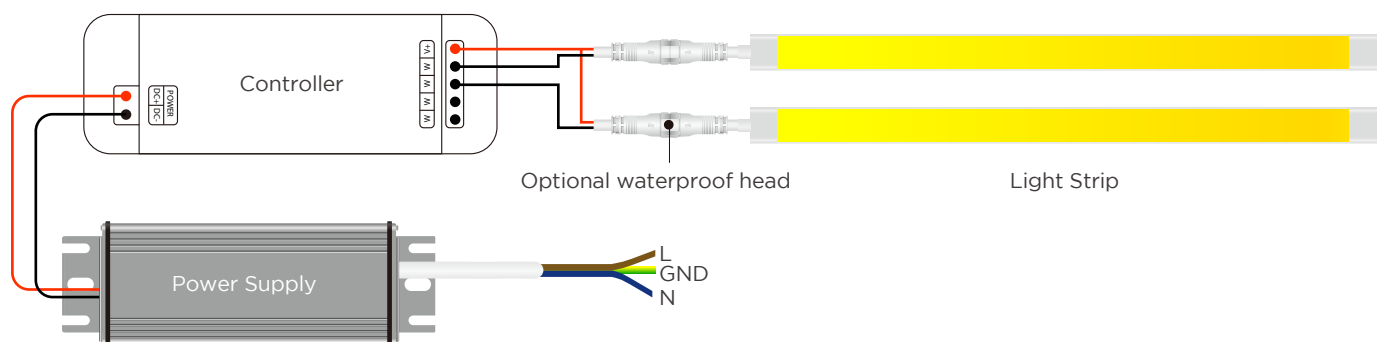
Products	Wire at end	Wire at side	Wire at bottom
Ordinary End Cap			

Accessories Specification

Name	Quantity	Note
1. End cap	4pc	
2. Front outlet end cap	2pc	*Optional
3. Clips	10pc	
4. Glue & Glue nozzle	2pc	
5. Screw	10pc	




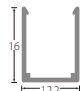

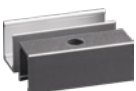
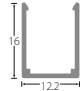

Power Connection Diagram



Recommended Power Supplies

Item Number	Description	Input Voltage	Output Voltage	Dimmable	Dimensions
DVH75-24-P7-G1LS AL	Waterproof Driver 75W	220-240	DC24V 3.12A	NO	165×60×36.5mm
DVH100-24-P7-G1 LS AL	Waterproof Driver 100W	220-240	DC24V 4.16A	NO	167×60×34.6mm
DVH150-24-P7-G1 LS AL	Waterproof Driver 150W	220-240	DC24V 6.25A	NO	167×60×34.6mm
DVH200-24-P7-G1LS AL	Waterproof Driver 200W	220-240	DC24V 8.33A	NO	216×65×39.5mm
DVH300-24-P7-G1 LS AL	Waterproof Driver 300W	220-240	DC24V 12.5A	NO	265×65×39.5mm

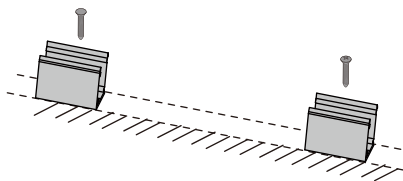
Aluminum Profile List

Product NO.	Size	Section diagram	install
	12.2×16mm		
	12.2×16mm		

Installation

① Clip

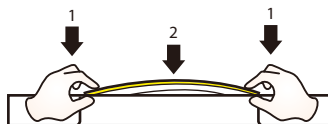
Fix the clips and aluminum profile via the screws.



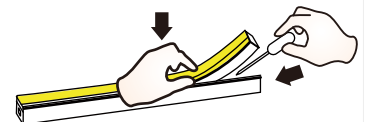
⚠ Suggestion: 2pcs clips per meter.

② Neon Series

Simultaneously install the neon from both ends.

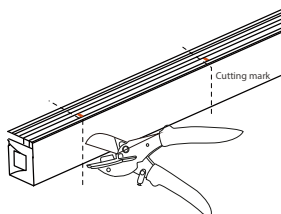


Should use tools to assist when remove the neon.



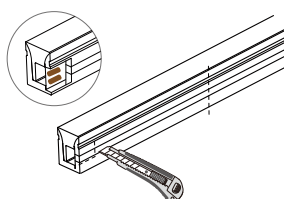
Cutting

① Cut the neon to be required length



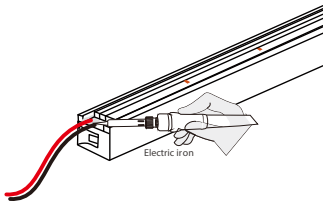
⚠ The minimum cutting unit is based on the cutting mark.

② Cut the side of neon, expose the soldering pad

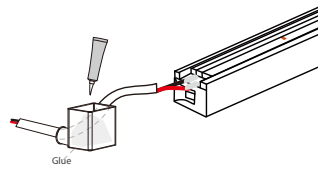


Soldering

① Solder the cable onto the PCB



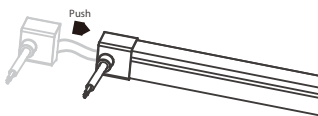
② Put the wire into and inject glue into the end cap



⚠ The amount of glue is about 1/3-1/2 of end cap.

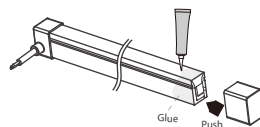
Intall end cap

① Push the end cap to wrapp end of neon

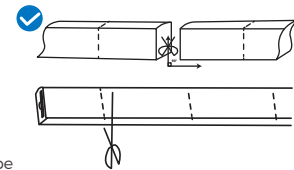


⚠ After the glue is injected, the neon needs to be laid flat for 2 hours to before other process.

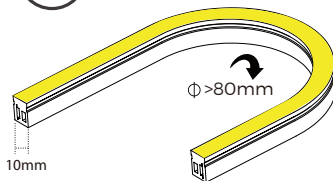
② Apply gel around the tail of neon and install the end cap



⚠ After the glue is injected, the neon needs to be laid flat for 2 hours to before project process. Glue will complete dry after 24hours.

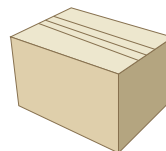


Side bending series correct bending way.



PACKING

N.W /CTN(KG)	QTY / CTN(reel)	G.W/CTN(KG)	CTN Size(mm)
1.1	10	14	330×305×330



SHENZHEN LEDMY CO.,LTD

+86(755)27658410 sales@ledmy.com

Marketing Center: Room1503-1505, Block 2, Excellence City, Zhongkang Road, Futian District, Shenzhen City, Guangdong Province, PRC 518049.

DONGGUAN Manufacturing Center: LEDMY Industrial Park, Tongren Road, Longbeiling Industrial Zone, Tangxia Town, Dongguan City, Guangdong Province, PRC 523715.

JIANGMEN Manufacturing Center: NO. 3 Huahui Road, Waihai Street, Jianghai District, Jiangmen City, Guangdong Province, China, PRC 529000.